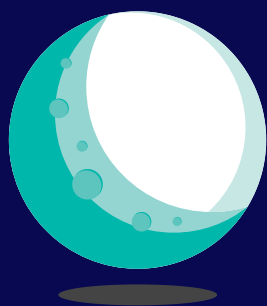


# Impact Report

2022 - 2023



**LUNA**  
CHILD AND YOUTH  
ADVOCACY CENTRE

## Our Purpose

To ensure those impacted by child abuse receive the support they need to heal, build resilience, and thrive; and to create communities where offenders are held accountable and all children and youth are safe.

## Our Values

We are one team.

We are committed to diversity.

We make a difference.

We strive for excellence.



---

”

We are very appreciative for everyone at Luna and the support they provide. They took a difficult situation and made it as comfortable as it could have been. We were treated with care and dignity and it made such a difference. Thank you, Luna!

---

*Luna Client*

## **I WE ARE LUNA**

As a Child and Youth Advocacy Centre, Luna provides a safe and supportive environment for children, youth and families who have been impacted by abuse. Luna is a child-focused space with a multi-disciplinary team (MDT) of more than 130 professionals with expertise in law enforcement, child protection, prosecution, mental health, medical assessment, and victim advocacy. Our team is dedicated to ensuring that every child receives the care and support they need to heal. Together, we investigate reports of child abuse, conduct forensic interviews, determine and provide evidence-informed interventions, and assess cases for prosecution. We also leverage our shared expertise and influence to build engaged communities where everyone plays a role in keeping kids safe.

### **WHERE WE WORK, LIVE AND PLAY**

In the spirit of reconciliation, Luna Child and Youth Advocacy Centre acknowledges that we live, work and play on the traditional territories of the Blackfoot Confederacy (Siksika, Kainai, Piikani), the Tsuut'ina, the Îyâxe Nakoda Nations, the Métis Nation (Region 3), and all people who make their homes in the Treaty 7 region of Southern Alberta.

## ENTRY POINTS

- Alberta Health Services
- Children's Services
- Calgary Police Service
- RCMP

# AN INTEGRATED RESPONSE

## 1. ASSESSMENT

We work with partners to determine risk and the best way to handle individual cases of child abuse. Once an assessment has been completed, children and families are connected to the appropriate resources for support.

## 3. ONGOING SUPPORT

Luna offers ongoing support to families throughout the healing and recovery process. This includes counselling, therapy, case management and referrals to other community resources. The aim is to help families receive the support they need to heal, protect children and youth from further harm, and rebuild their lives.

The first stage in an investigation is a forensic interview conducted by forensic interviewers from Calgary Police, Children's Services, RCMP or a Forensic Interview Specialist from Luna. The interview provides evidence that is needed to proceed with criminal charges.

## 2. INVESTIGATION

## 4. JUDICIAL PROCESS

Luna provides families with a range of supports during the judicial process, including providing information, helping prepare for court appearances, and accompanying to court. We work closely with law enforcement and prosecutors to ensure that cases are handled sensitively and efficiently, protecting the rights of children and youth and ensuring their voices are heard.

# I THE MULTI-DISCIPLINARY TEAM

Addressing child abuse requires a collaborative effort involving multiple organizations and individuals to ensure a comprehensive investigation and appropriate response. By bringing these entities together, we aim to minimize the need for children and families to repeatedly recount their experiences and navigate a complex system alone. Our integrated model enables us to share information, expertise and resources in real-time, helping us to provide the strongest possible response for children, youth and families, ultimately promoting their healing and well-being.



## 40 Calgary Police Service

- Investigate reports of child abuse
- Respond to immediate safety concerns
- Conduct child forensic interviews

## 37 Alberta Health Services

- Conduct medical evaluations & psychological assessments
- Provide individual and group therapy to children and caregivers.

## 16 Children's Services

- Investigate reports of child abuse
- Carryout child intervention investigations

## 3 Alberta Justice & Solicitor General

- Advise policing agencies regarding investigations and prosecuting offences
- Provide prosecution, court and justice services for children and their families

## 3 RCMP

- Investigate reports of child abuse
- Respond to immediate safety concerns
- Conduct child forensic interviews

## 32 Luna Centre Staff

- Provide victim support services
- Conduct research and evaluate services
- Enhance and facilitate collaborative practice

# REFLECTIONS FROM PARTNERS

## **Alberta Health Services**

In collaboration with our Partners at the Luna Child and Youth Advocacy Centre, the physicians, nurses, social workers and psychologists of the Alberta Health Services Child Abuse Service provide exceptional support to the children, youth and families who have been impacted by abuse. This past year, we successfully transitioned to Connect Care, developed a new consultation model, and brought back team assessments—all of which strengthened our ability to work collaboratively and provide the most effective supports to children and their families. We are also incredibly proud of the AHS medical team at Luna for hosting the Canadian Symposium on Advanced Practices in Child Maltreatment, which brought together child and youth advocacy centres and medical professionals from across the country to build capacity and share innovative practices.

## **Alberta Justice & Solicitor General**

This past year provided us with many opportunities to strengthen and deepen our collaborative relationship with our Partners at Luna. Our Luna Advisory Team, which consists of three Prosecutors, is glad to have returned to weekly on-site attendance at the Luna Centre, ensuring we are available to child abuse investigators and victim support staff. The ability to collaborate and share information amongst the different members of Luna's Multi-Disciplinary Team has been an invaluable benefit to our organization. As an example, in one of our prosecutions where family dynamics were strained and support was lacking, the team at Luna went out of its way to connect with the complainant and provide help that was not available at home. Through the tireless efforts of Luna, this case made it to trial and the young person involved was given all the support they needed along every step of the process.

## **Calgary Police Service**

The collaborative model of child and youth advocacy centres provides the strongest possible response and outcomes for children, youth and families impacted by abuse. It is truly amazing to see the Partners at Luna—experts in their own fields—come together to help build resilience in young people. Whether it be moving a child to a safe place, investigating reports of abuse, or providing supports to victims and families, each Partner has a critical role in the process to help build resiliency in the child. This last year, several CPS members were recipients of the *Ontario Provincial Police Anti-Human Trafficking Team Achievement* award. We are incredibly proud of those members as well as all members of the Child Abuse Unit here at Luna, and we continue to be so grateful for the continued support offered to us by our Partners and the community.

# REFLECTIONS FROM PARTNERS, CONT.

## Children's Services

Over the last year, Children's Services staff members at Luna have continued to work diligently to maintain safety for the children we are involved with, leaning into Luna's collaborative approach, and working with Partners to ensure better outcomes for children and families. The continued commitment of Children's Services to Luna's integrated model has ensured that children and families have a better understanding of the systems they are involved with and the processes that are occurring, reducing some of the system-induced trauma that can be experienced. The continued collaborative efforts with external partners in other jurisdictions have also enabled us to connect children with extended family supports to maintain relationships with family and culture even when residing at home has not been an option. These efforts of Children's Services staff members in partnership with Luna will have significant positive impacts for these children for years to come.

## Royal Canadian Mounted Police

We are so incredibly proud to be part of the collaborative team at Luna, and of the incredible impact our collective work continues to have on the lives of young people and communities. This last year, we continued to provide critical training and instruction to our RCMP members and CFS employees through the Collaborative Investigations Course, empowering our first responders with the knowledge and skills they need when they get a call pertaining to child abuse. We've also expanded our focus and reach around awareness and education through our presentations to grades 6-12 students in schools and to parent groups within the communities that Luna serves. We continue to look for new opportunities to broaden education and awareness with the goal of reaching as many young people, parents and communities as we can so that everyone is empowered with the knowledge needed to help ensure young people are safe.



APRIL 2022 - MARCH 2023

# WHO WE SERVE

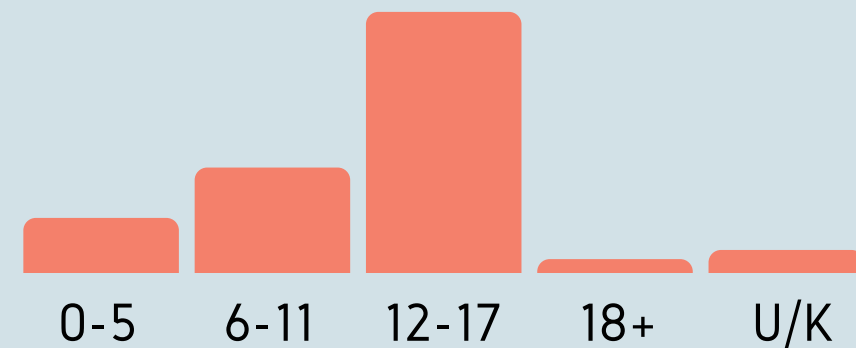
# 2,751

children, youth, and families supported

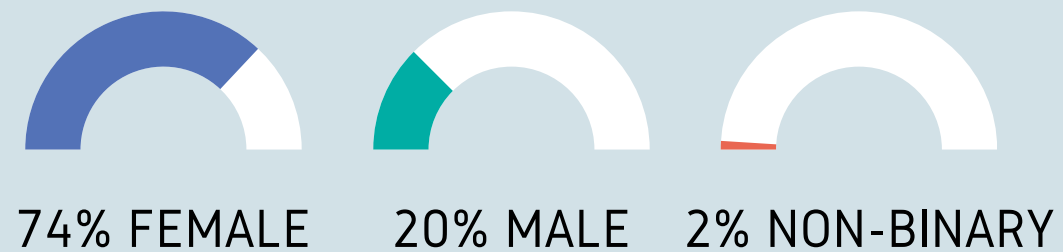
837 new victims  
514 parents/caregivers  
32 siblings  
1,368 ongoing files

## DEMOGRAPHICS

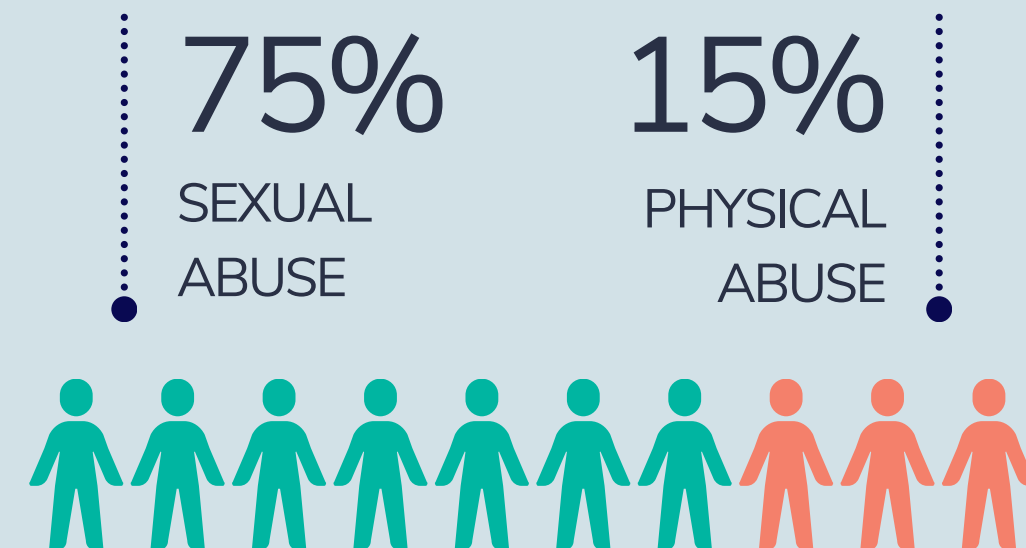
### AGE



### GENDER



## TYPE OF ABUSE





APRIL 2022 - MARCH 2023

# YEAR IN REVIEW

**731**

CHILD LIFE SUPPORT



**3,775**

THERAPY SESSIONS

**884**

REFERRALS TO COMMUNITY RESOURCES

**696**

FORENSIC INTERVIEWS

**4,320**

SUPPORT CALLS TO FAMILIES

**27**

REMOTE TESTIMONIES AT LUNA

**3,056**

COURT SUPPORTS

**5,302**

HOURS VOLUNTEERED



**3,117 REFERRALS**

ACROSS ALL LUNA PROGRAMS AND PARTNERS

**701**

JICAT

(Joint Investigative Child Abuse Team of CPS, CS and AHS)

**621**

RCMP

(Royal Canadian Mounted Police)

**1,275**

CARRT

(Child at Risk Response Team)

**276**

AVIRT

(Alberta Vulnerable Infant Response Team)

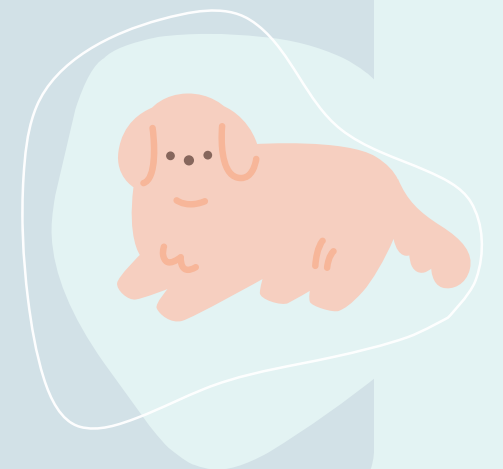
**244**

POST

(Prenatal Outreach Support Team)

**293**

FACILITY DOGS SUPPORT Interviews, medical exams, crown meetings, and court appearances.



# I A COMMITMENT TO EXCELLENCE: ADDITIONAL HIGHLIGHTS

## Research & Knowledge Centre

At Luna we believe that a strong research program is critical to strengthen the voice and impact of CYACs. In 2022, we established the Child and Youth Advocacy Research and Knowledge Centre in partnership with the Faculty of Social Work at the University of Calgary, the purpose of which is to generate and integrate new evidence and knowledge about child and youth advocacy into everyday practice. Over the last year, we hired research staff, secured grant funding, and established our research focus areas with input from people with lived experience, staff and partners at CYACs, policy makers and academic experts. We are excited to formally launch the Centre and to begin research projects that will ultimately enhance outcomes for children, youth and families.

## Prevention Strategy

2022-23 saw the development of Luna's three-year *Child Abuse Prevention Strategy*, an important step in recognizing Luna's role in child abuse prevention. Developed with the support of PolicyWise for Children, and through engagement with Luna's Multi-Disciplinary Team, the overarching goal of the strategy is to establish Luna as a leader in child abuse prevention in Calgary and the surrounding area, which will be achieved by: *Building child and youth safe cultures through awareness raising and education; Enhancing collaborative approaches to prevention; and strengthening and mobilizing the evidence base through research and evaluation.* As a living strategy, it will continue to be refined in response to what is learned through the partnerships and coalitions developed, engagement with diverse groups, and through research and ongoing learning.

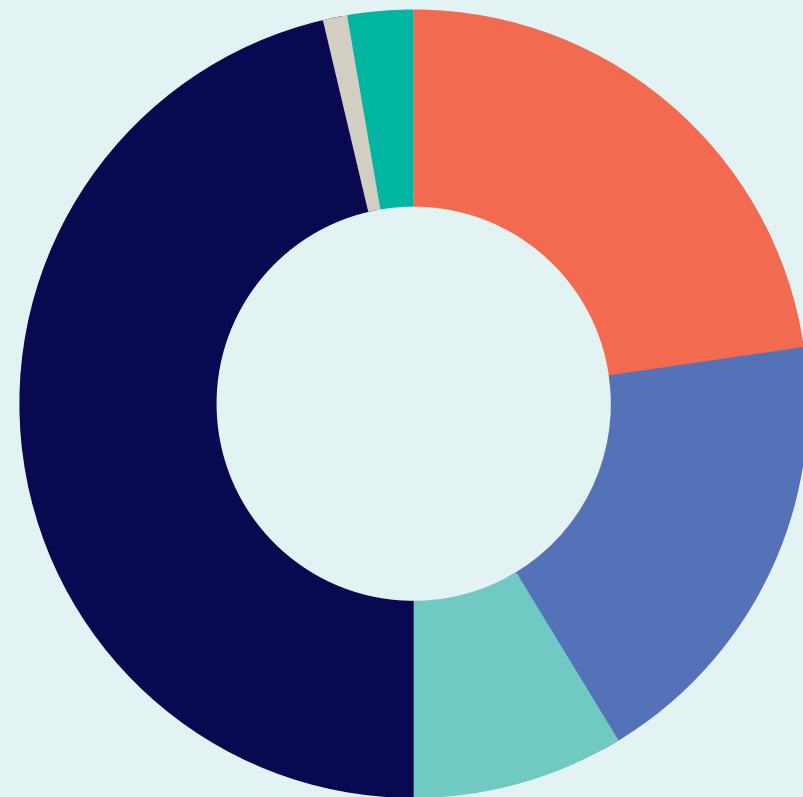
## Education

Our partnership with Education continues to be a critical component of our work at Luna. This past year saw us deepening and broadening our collaboration with Calgary Board of Education, Calgary Catholic School District and other school districts in the communities that Luna serves. These strong working relationships have allowed us to engage on the issues that are important to schools, ensure school staff are connected to Luna and have the support and resources they need, and that children and youth who come to Luna are supported in their schools. In 2022-23, Luna's **Education Liaison** consulted on **295 cases** of child abuse and made **35 presentations** to schools.

APRIL 2022 - MARCH 2023

# FINANCIAL HIGHLIGHTS

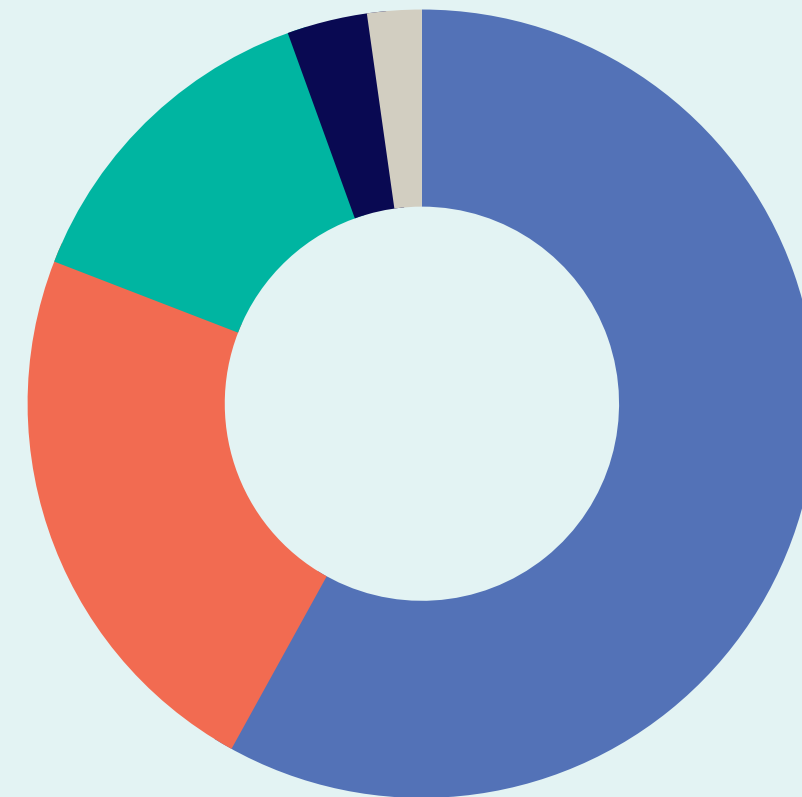
## Revenues



- Donations: **\$1,020,753 (22.7%)**
- Partner Contributions: **\$834,491 (18.6%)**
- Total Grant Revenue: **\$2,516,625**
- Federal Grants: **\$390,799 (8.7%)**
- Provincial Grants: **\$2,081,233 (46.3%)**
- Municipal Grants: **\$44,593 (1.0%)**
- Other Income: **\$119,519 (2.7%)**

**Total: \$4,491,388**

## Expenditures



- Salaries/Benefits: **\$2,585,526 (54.6%)**
- Occupancy/Facility Cost: **\$1,017,082 (21.5%)**
- Programs: **\$606,162 (12.8%)**
- IT Support: **\$145,758 (3.1%)**
- Advertising/Communications: **\$100,762 (2.1%)**

**Total: \$4,455,290**

Note - Amortization Expenses: **\$279,056 (5.9%)**

[lunacentre.ca](http://lunacentre.ca)



Charitable Registration #:  
82679 3283 RR0001